



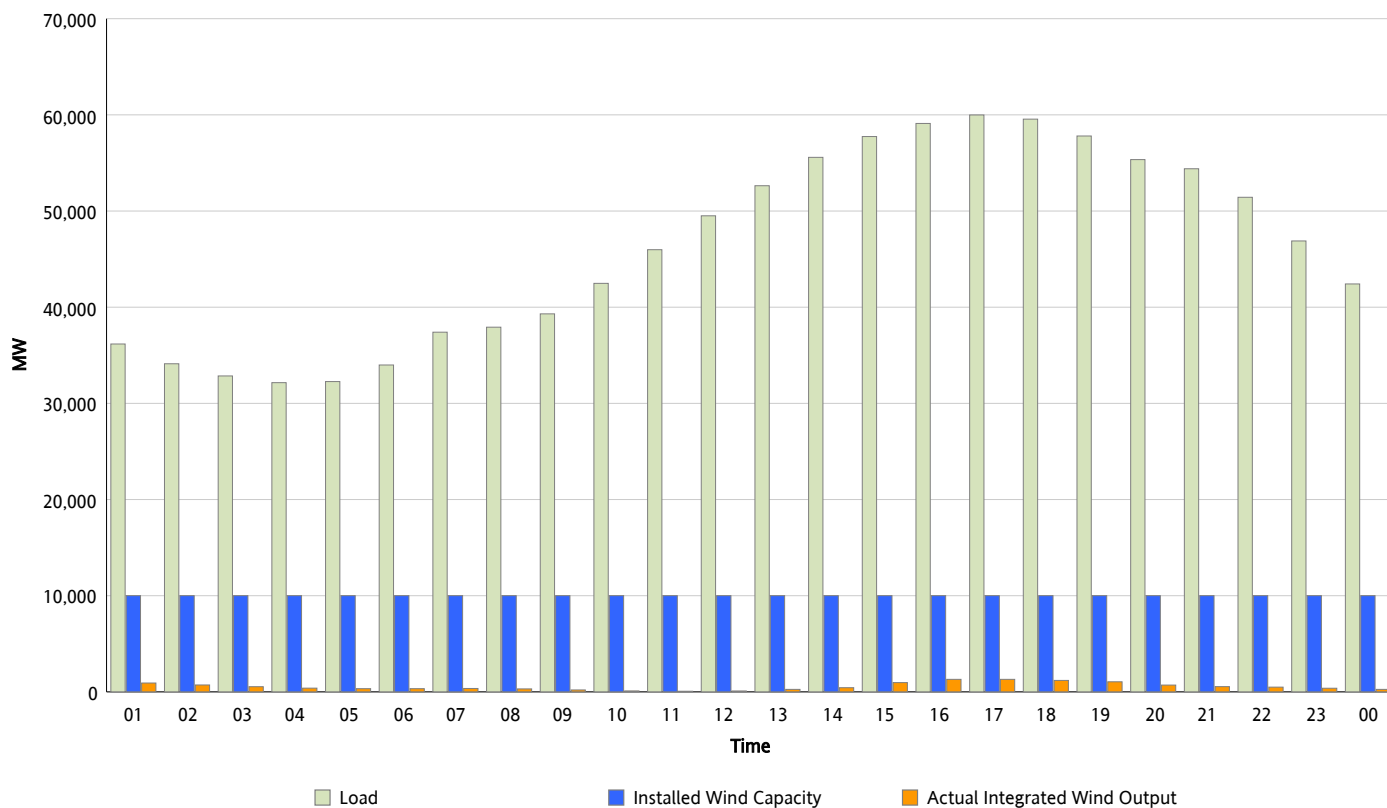
ERCOT Grid Operations

Wind Integration Report : 08/27/2012

Peak Load	59,990 MW
Load Peak Hour (HE)	17
Wind Over Peak	1,301 MW
Wind Record 06/19/12	8,368 MW
Max Wind Value*	1,370 MW
Wind Peak Time	16:20
Wind Integration %	2.28 %

Hourly Average Actual Load vs. Actual Wind Output

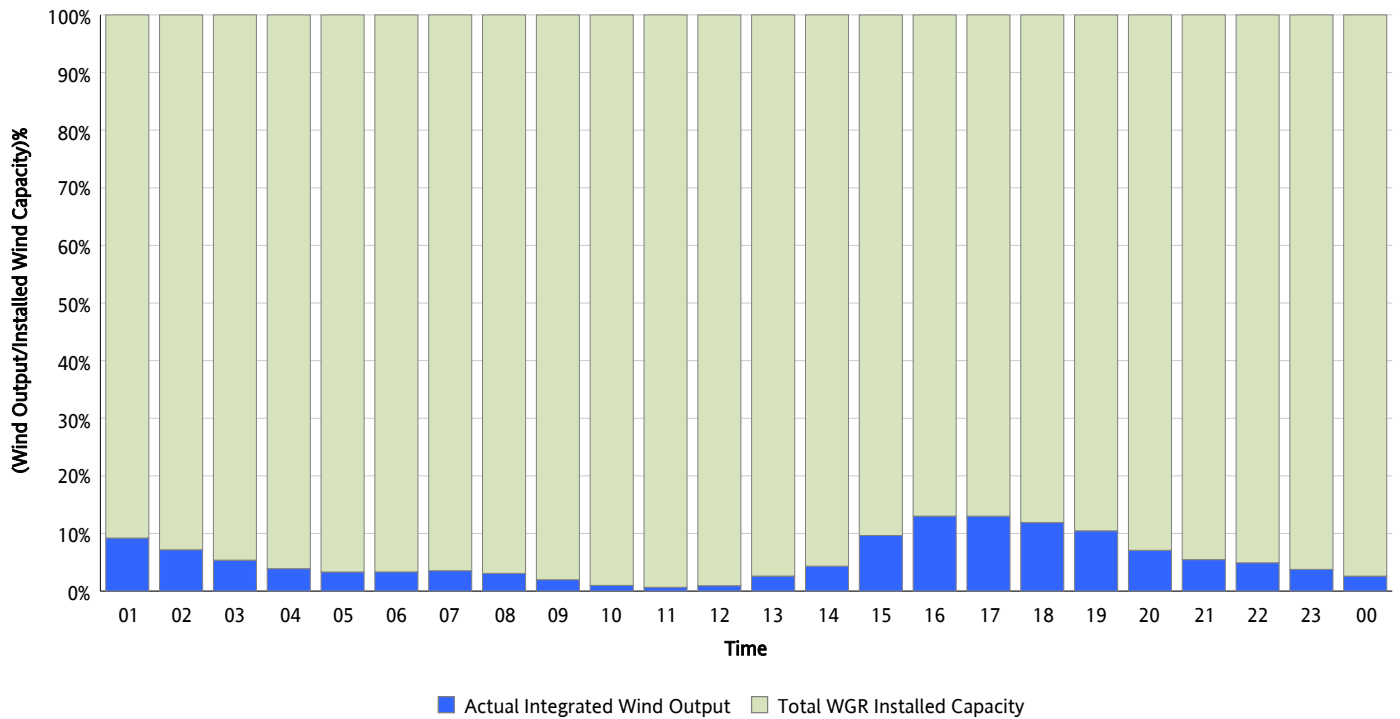
08/27/2012



* Wind Record and Wind Max represent instantaneous values and the rest of the values are integrated over the hour

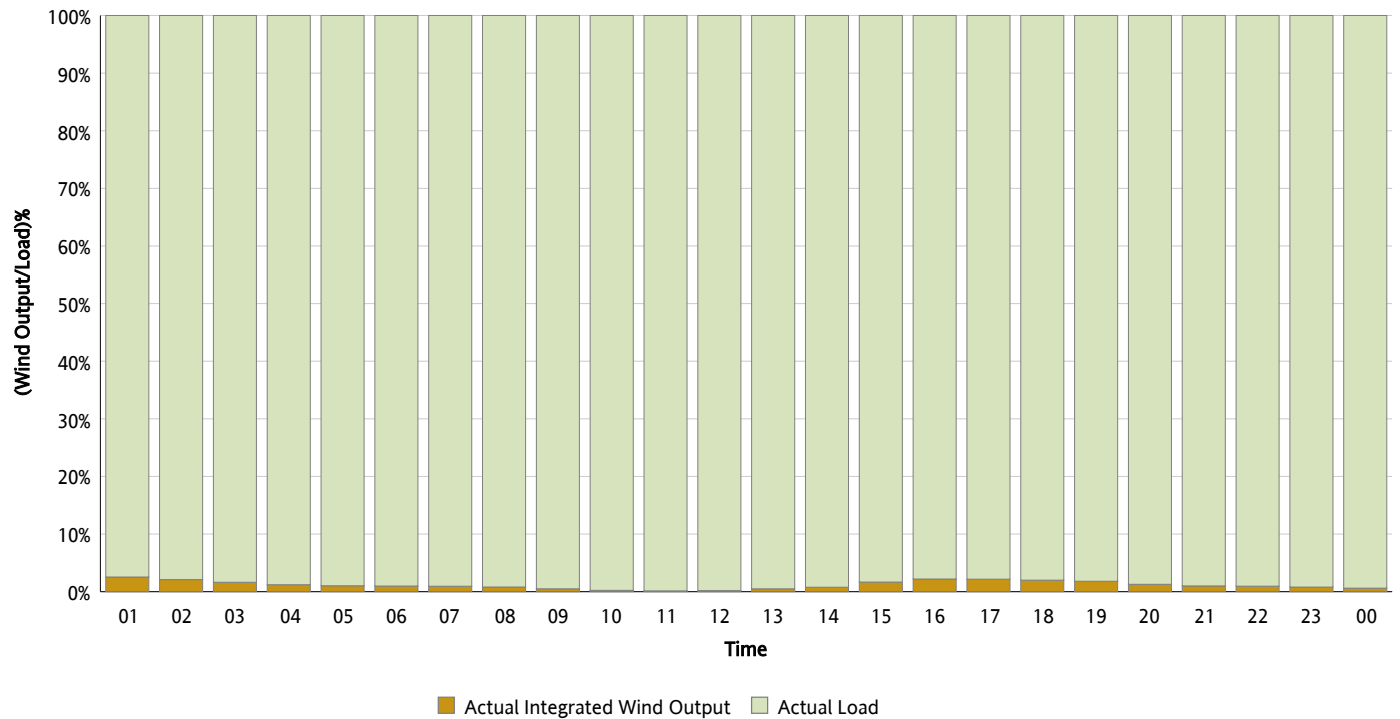
Actual Wind Output as a Percentage of the Total Installed Wind Capacity

08/27/2012



Actual Wind Output as a Percentage of the ERCOT Load

08/27/2012



ERCOT Load vs. Actual Wind Output

08/20/2012 - 08/27/2012

